

HI I'M  
STEVE

# Live events portfolio

[steve@hi-im-steve.co.uk](mailto:steve@hi-im-steve.co.uk)

[www.hi-im-steve.co.uk](http://www.hi-im-steve.co.uk)

Front - Shows designed  
Back - Shows supported



Andy C @ Reading Fest



Camelphat @ Rfest



Andy C @ R fest



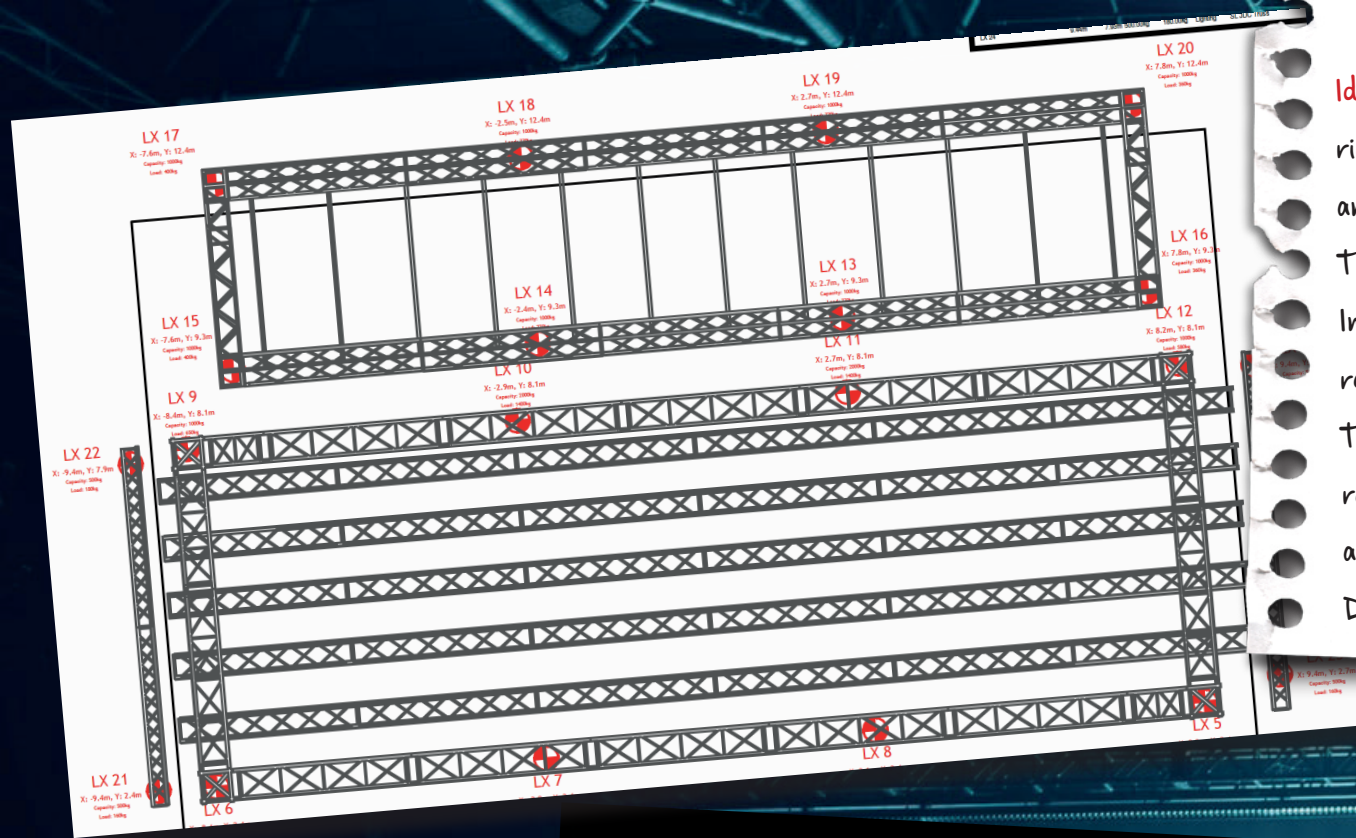
I was given the brief to design the dance stage for **Reading & Leeds Festival 2019** The one caveat of the design is it must be identical for both locations so that acts performing on the 1st of their 2 performances can then take their saved show file to the 2nd location and carry on where they left off.

With many acts carrying roll on lighting packages the 2 outside PA towers were used to hang more lighting fixtures with lighting fixtures rigged for the entire width of the stage this provided plenty of eye candy for those spending their time in the tent enjoying acts like:- **Camelphat, Holy Goof, Andy C & Dillon Francis.**

One of the advantages of having identical lighting rigs in both locations is the Leeds site programmed on 1 brand of lighting desk and 1 programmed the other in Reading. We then swapped show files, This saved on programming time. Designed and operated by Steve Harris.

«READING  
LEEDS»





Idles headline show at Alexandra Palace brought with it a complex rigging solution. This was due to the large number of lighting trusses and grid of jarag panels hanging at 45 degrees to the audience. This would require a large amount of rigging points and motors. Instead a mother grid was drawn above the 5 main lighting trusses reducing the motor count by 12.

This reduced the time it takes to get the rig in the air and show ready. This also made cabling and patching the rig more efficient and cost effective.

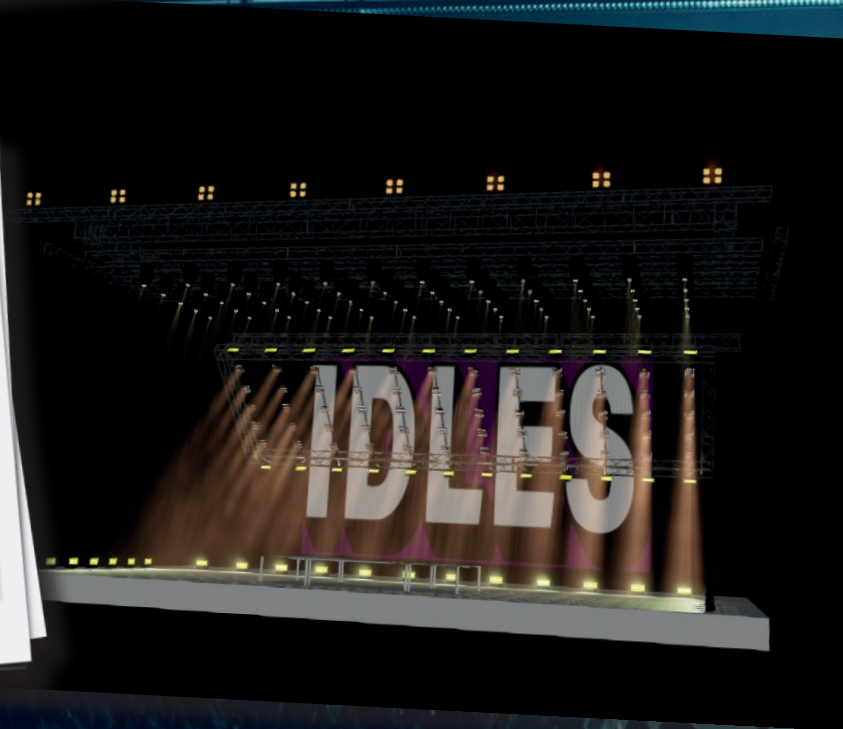
Drawn by Steve Harris

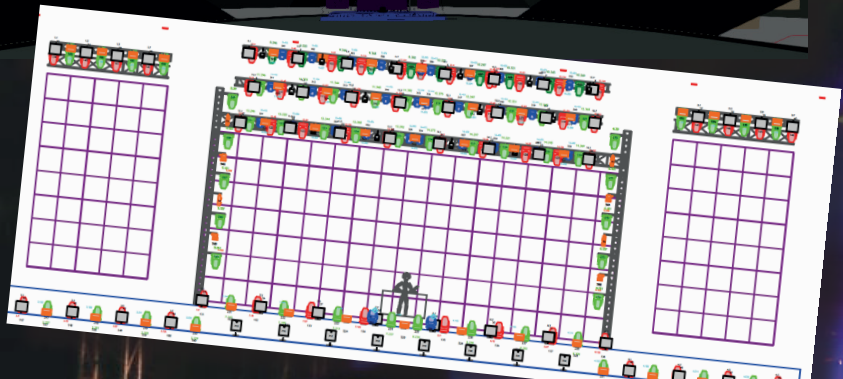
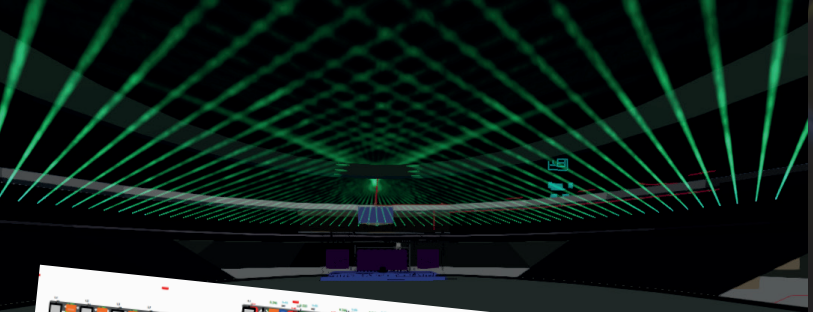
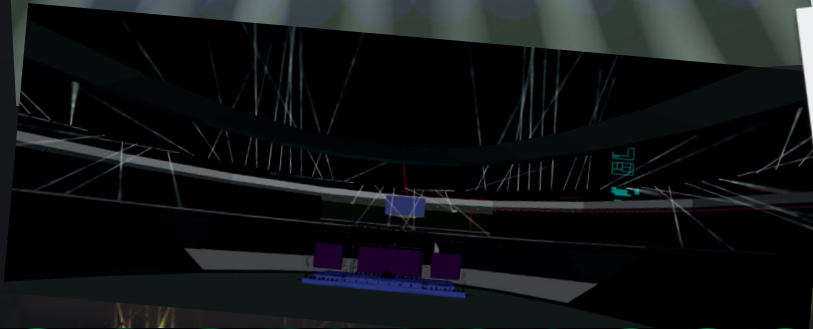
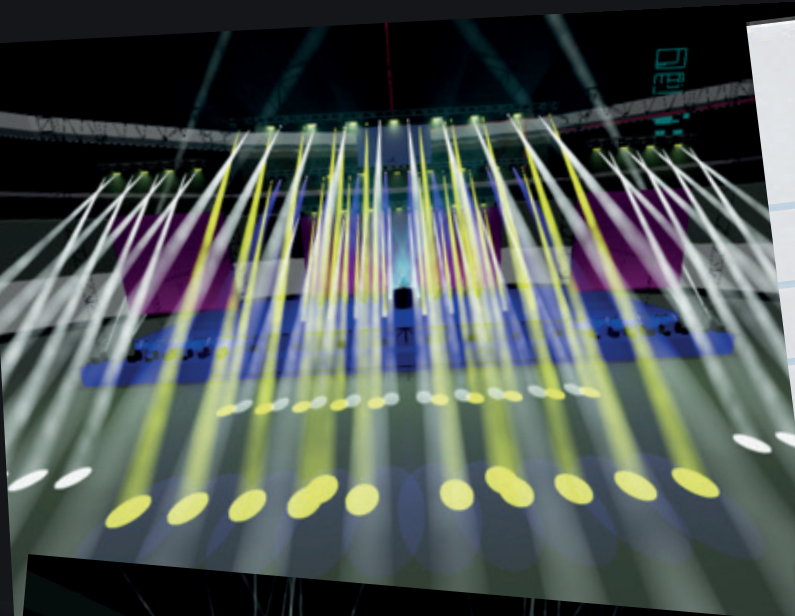


Idles Rehearsals



Idles @ Alexandra Palace





Lolapaloozas Perry's Stage was located at the Olympic Stadium in Berlin. With a total capacity of 50000 it was very easy for a large 18m stage to get lost in the vast size of the venue despite 2 large IMAG screens with lighting fixtures bottom and top of the screens. It was decided an array of 70 Aqua beams will be placed on the upper seating perimeter of the venue to create a 180 degree effect of beams around the arena. The effect was reserved for Martin Garrix & Underworld who were headlining the stage and with the additional lasers that were provided made what looked like a very small stage in a very big venue expand into the space. Stage design Steve Harris

# Lolapalooza BERLIN

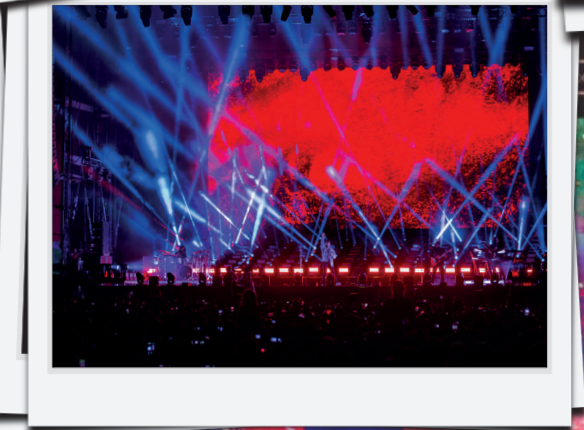
underworld   
 MARTIN GARRIX



Underworld @ lolapalooza

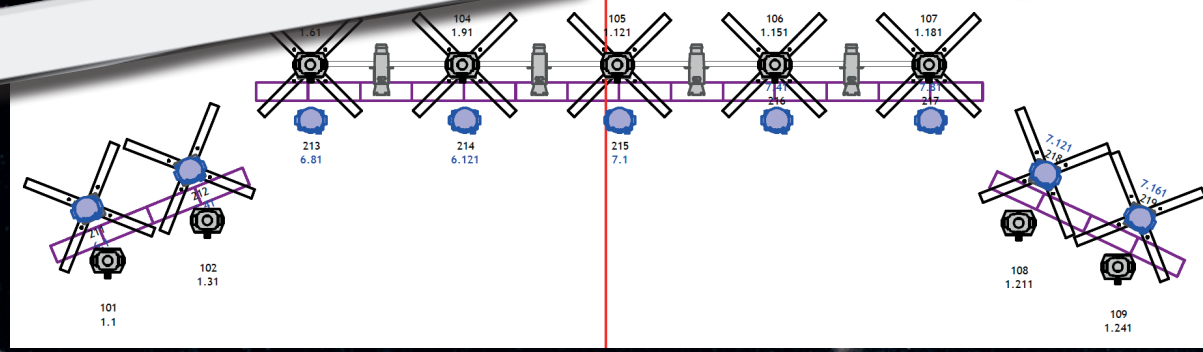
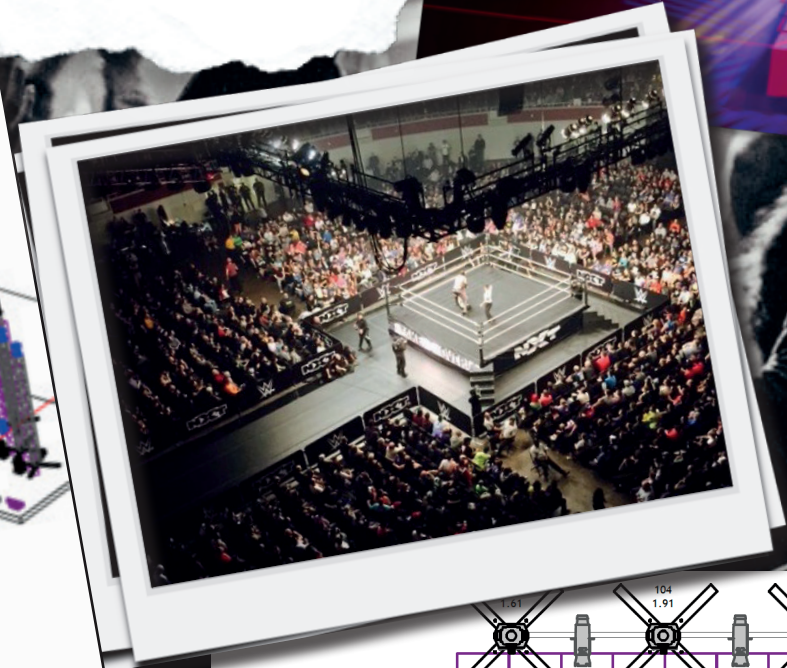
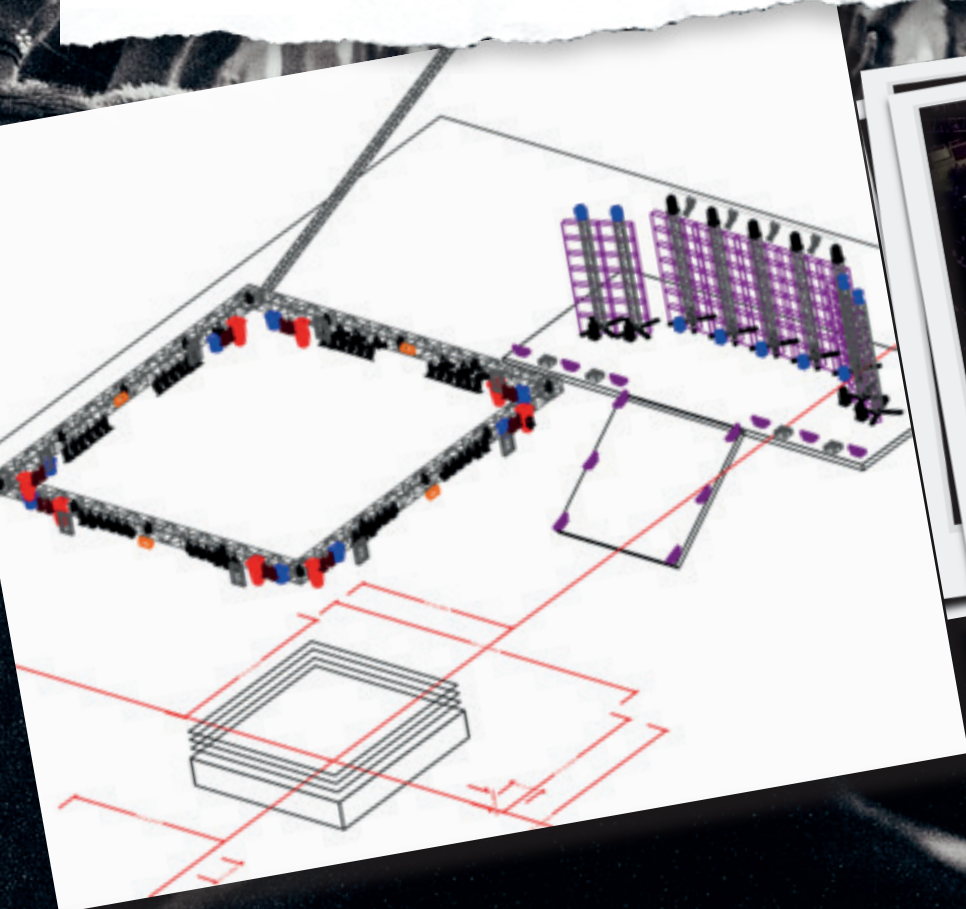


Lolapalooza, Berlin, Perry's Stage



**WWE NXT UK's** show is essentially the same setup wherever it goes in the country. The big difference is the lighting fixtures change depending on what is available. Rather than producing a unique patch for each show a generic patch was created allowing enough space for the different types of fixture. When the lighting operator for the shows sets up his desk its a simple case of punching in the fixture number and the manufacturer with the existing programming retained from each show. This made getting the show up and running much quicker with little reprogramming of the lighting desk.

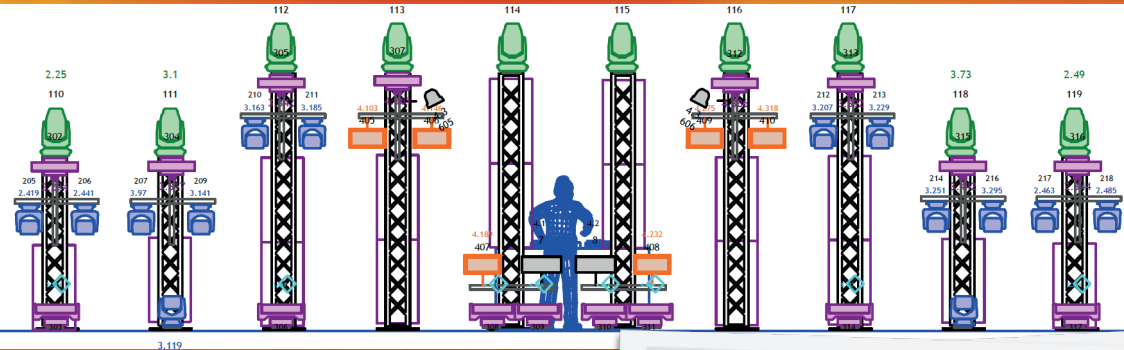
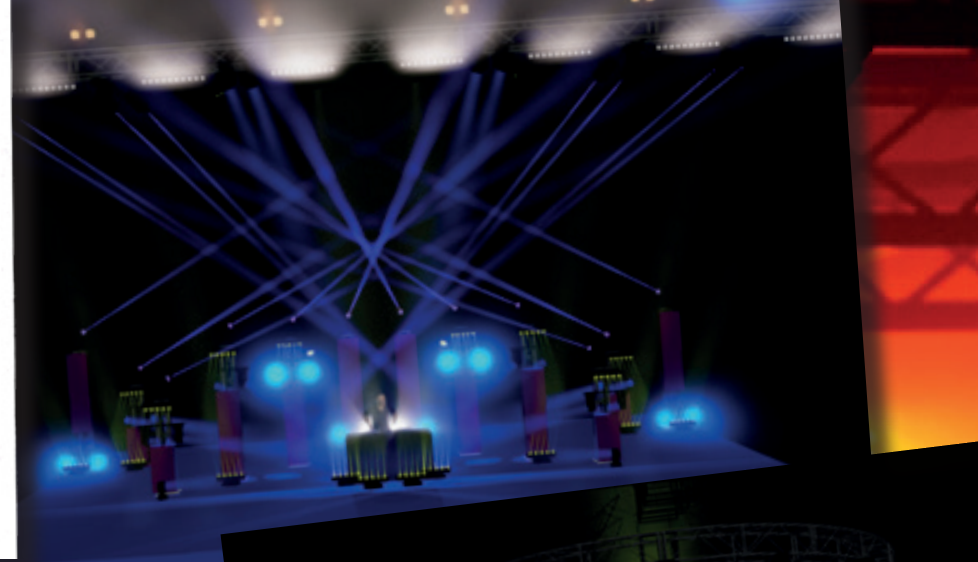
This was also useful when advancing shows to arenas so rigging points were already in place when the production arrives at the venue. Drawn and designed by Steve Harris



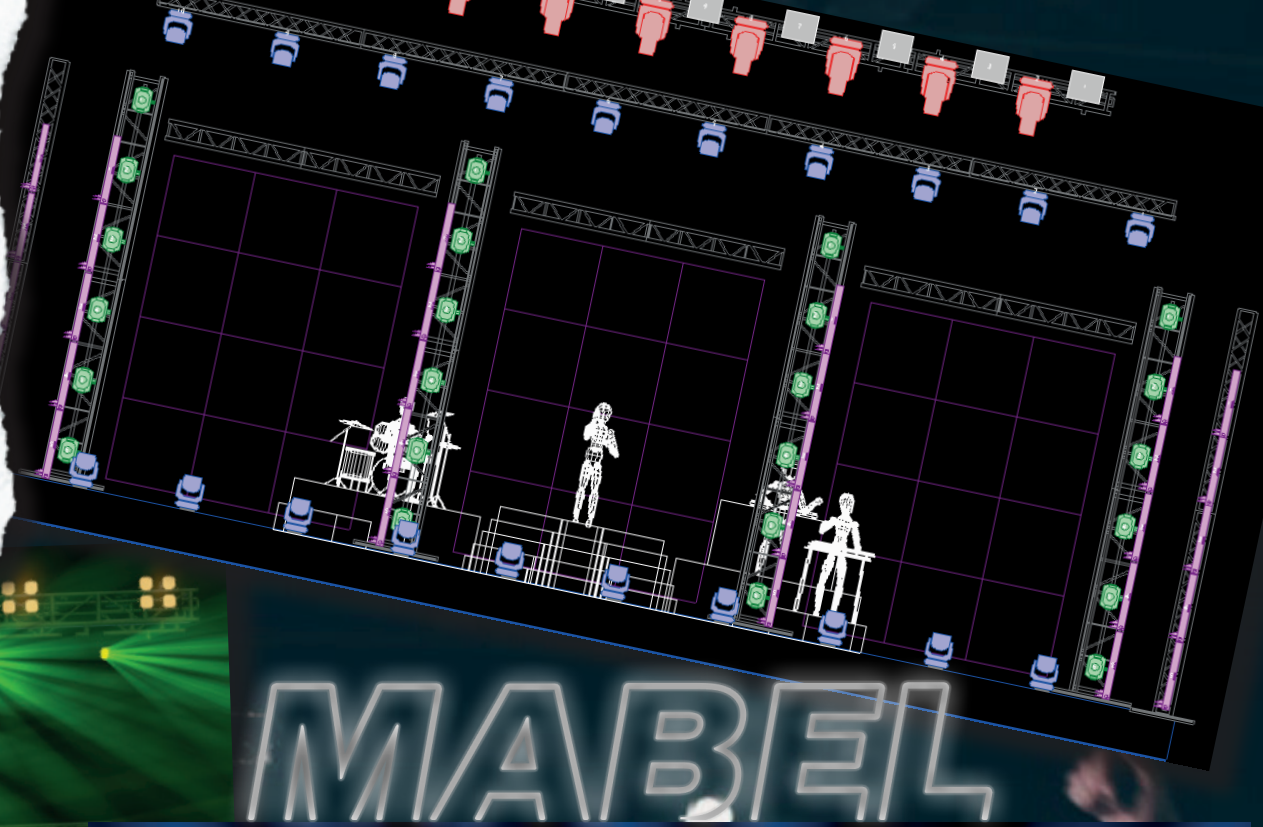
The problem presented with **Mint Festival** was the weight restriction on the Singular truss hanging between king poles within the big top arena. This restricted the lighting fixtures we could hang on the front truss. The answer was to put all the main lighting fixtures and video screen on ground support towers spread across the stage.

This created the feeling of space around the performer while restricting stage access to their guests and the additional god lights behind enhanced those “hands in the air” moments.

The other stage was hosted by **Elrow** with a brief of making it as colourful as possible to compliment their large amount of decor to brand the stage. Mission accomplished. Stage and lighting design Steve Harris.



**Mabel** required a touring floor package for her European 2020 shows. However wanted to scale the design up for the bigger shows. 2 lighting rigs were created with similar fixtures so the programming for the tour could be easily scaled up for the bigger shows by using similar but larger fixtures. Sceptrons were chosen for the smaller shows which were scaled up to GLP X4 bars to give more punch for the larger stages. To finish off the symmetrical design Robe BMFL's and Megapointes were used. .



Shows I have supported from a technical aspect from Lighting, Video,  
Front of house technical support or networking include:-

# ADELE


# MUSE

 pinkpop

 CLAYTONBURY  
FESTIVAL

 METALLICA

 RW

Ed Sheeran  
  
Mathematics  
TOUR

**TAYLOR SWIFT**  
THE ERAS TOUR



Adele, Germany, World record  
Largest LED Video Screen.

Case study link.

# ADELE



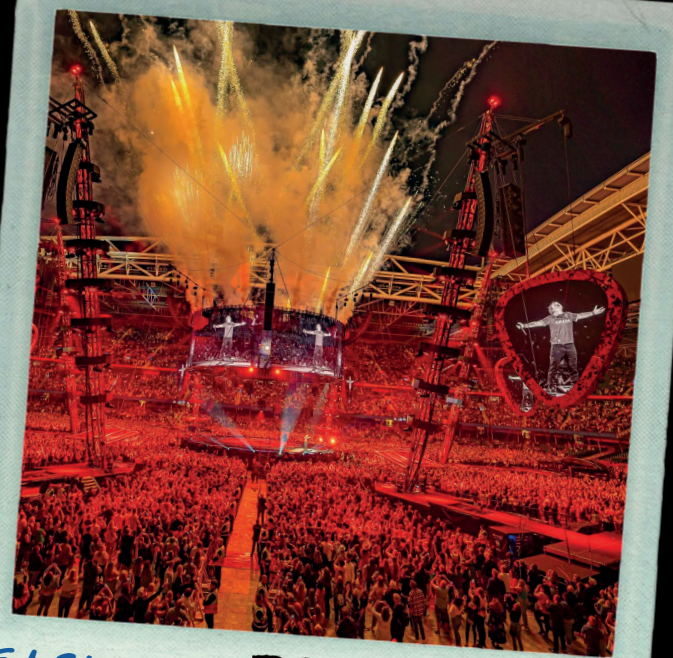
**TAYLOR SWIFT**  
THE ERAS TOUR

Taylor Swift  
Eras world tour  
Video tech support tour



# MUSE

MUSE  
The 2nd law tour  
Tech support - Lighting



Ed Sheeran Ed Sheeran\*  
World Tour  
Video Tech support & Training